

*18 Days*

*Greenland and the  
Canadian Arctic*



*day by day*

# Greenland and the Canadian Arctic, 18 days

**Cartography travelled 3,026 nautical miles aboard the SILVER CLOUD (Pic. opposite page) for a 16-day expedition cruise in the High Arctic.**

A circuit sailing from the Arctic Circle region of western Greenland, to the Canadian Arctic Archipelago of Nunavut, Canada and back to the polar extremes of the far north of Greenland through the open sea of Baffin Bay.

Season: Late summer in the Northern Hemisphere (August / September).

Cartography flew from Italy to Greenland via Copenhagen, Denmark: Milan Malpensa Airport MXP to Copenhagen Kastrup Airport CHP (with Easyjet, direct, 2h) to Kangerlussuaq Airport SFJ (with Air Greenland, direct, 4h40).

Pre-cruise overnight stay in Copenhagen at HOTEL ALEXANDRA (Pics. 1-2).

## CRUISE

In Greenland: Søndre Strømfjord; Ilulissat icefjord (UNESCO World Heritage Site). In the Canadian Arctic Archipelago: Baffin Island and the Northwest Passage; Sirmilik National Park; Buchan Gulf & Icy Arm fjord; Devon Island and Croker Bay glacier fjord; Bylot Island (Migratory Bird Sanctuary); Marmorilik fjord; Philpots Island.

## LANDING / HIKE

In Greenland: Jacobshavn Glacier & Sermermiut valley; Disko Bay.

In the Canadian Arctic Archipelago: Fecham Bay; Dundas Harbour; Marmorilik old mine site.

## VISIT

In Greenland: Sisimiut: museum, Bethel Kirke (or “Blue Church”, old church, 1775) (Pic. 9); “new” church (1926) (Pic. 12);

Uummannaq: Museum (Pic. 10); Uummannaq music;

Qaanaaq: museum (based in Knud Rasmussen and Peter Freuchen’s original Thule trading station, 1910, relocated from Dundas to Qaanaaq) (Pic. 11);

Upernavik: open-air museum: colony manager home, Syssel council chamber (old church), old shop; cemetery and grave of Navarana (Pics. 3-4-5-6-7-8);

Disko Bay and Qeqertarsuaq Museum;

Ilulissat: museum (Knud Rasmussen’s house), Kunstmuseum, Zions Kirke (church, 1779).

## FOR MORE INFORMATION

[www.silversea.com/luxury-expeditions-cruises](http://www.silversea.com/luxury-expeditions-cruises)

[www.hotelalexandra.dk](http://www.hotelalexandra.dk)

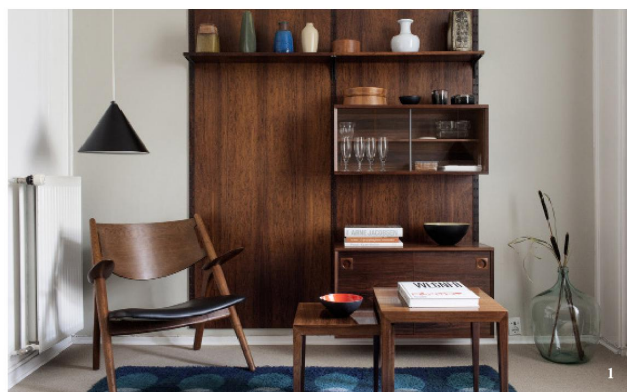
[www.visitgreenland.com](http://www.visitgreenland.com)

[www.nunavuttourism.com](http://www.nunavuttourism.com)

[www.sisimiut.museum.gl](http://www.sisimiut.museum.gl)

[www.uummannaqmusic.com](http://www.uummannaqmusic.com)

[www.upernavik.museum.gl](http://www.upernavik.museum.gl)



*Day by Day*



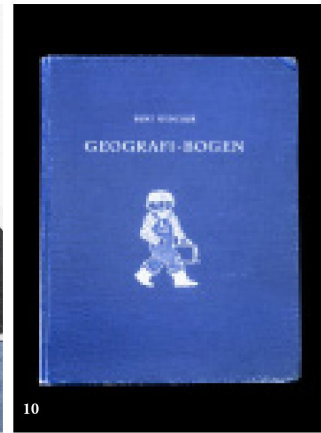
# Greenland and the Canadian Arctic, 18 days



6



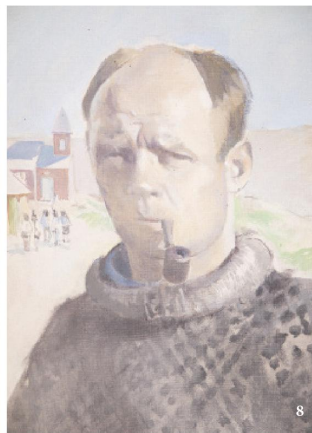
9



10



7



8



11



12

## FROM THE CAPTAIN'S LOG

		Nautical Miles
Kangerlussuaq, Greenland	to Sisimiut, Greenland	154
Sisimiut, Greenland	to Uummannaq, Greenland	303
Uummannaq, Greenland	to Pond Inlet, Nunavut, Canada	508
Pond Inlet, Nunavut, Canada	to Fechem Bay (Buchan Gulf), Canada	133
Fechem Bay (Buchan Gulf), Canada	to Bylot Island, Canada	145
Bylot Island, Canada	to Dundas Harbour (Devon Island), Canada	152
Dundas Harbour (Devon Island), Canada	to Queen Harbour, Nunavut, Canada	122
Queen Harbour, Nunavut, Canada	to Qaanaaq (Thule), Greenland	234
Qaanaaq (Thule), Greenland	to Upernavik, Greenland	456
Upernavik, Greenland	to Marmorilik, Greenland	196
Marmorilik, Greenland	to Qilakitsoq, Greenland	43
Qilakitsoq, Greenland	to Qeqertarsuaq, Greenland	182
Qeqertarsuaq, Greenland	to Ilulissat, Greenland	55
Ilulissat, Greenland	to Kangerlussuaq, Greenland	343
<b>TOTAL NAUTICAL MILES:</b>	<b>Kangerlussuaq to Kangerlussuaq</b>	<b>3,026</b>



ARCTIC OCEAN

GREENLAND SEA

ELLESMERE ISLAND

GREENLAND (DENMARK)

QUEEN ELIZABETH ISLANDS

CANADIAN ARTIC

• Qqanaaq (Thule)

• Upernavik

• Dundas Harbour  
• Devon Island

BAFFIN BAY

• Marmorilik  
• Uummannaq

• Bylot Island  
• Sirmilik National Park

• Pond Inlet  
• Fechan Bay  
• Buchan Gulf

• Oqertarsuaq  
• Ilulissat  
• Qilakitsoo

W

E

NUNAVUT

Arctic Circle

BAFFIN ISLAND

Arctic Circle

DAVIS STRAIT

• Sisimiut  
• Kangerlussuaq (Airport)  
• NUK

• IQALUIT

LABRATOR SEA

HUDSON BAY

NEWFOUNDLAND AND LABRADOR

ATLANTIC OCEAN

CANADA

UNITED STATES

ATLANTIC OCEAN

S